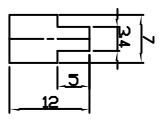
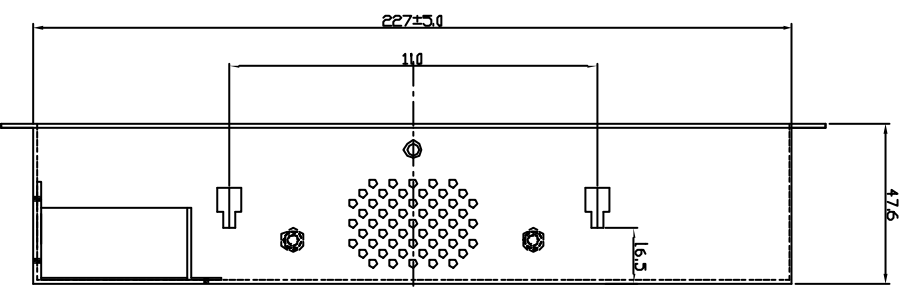
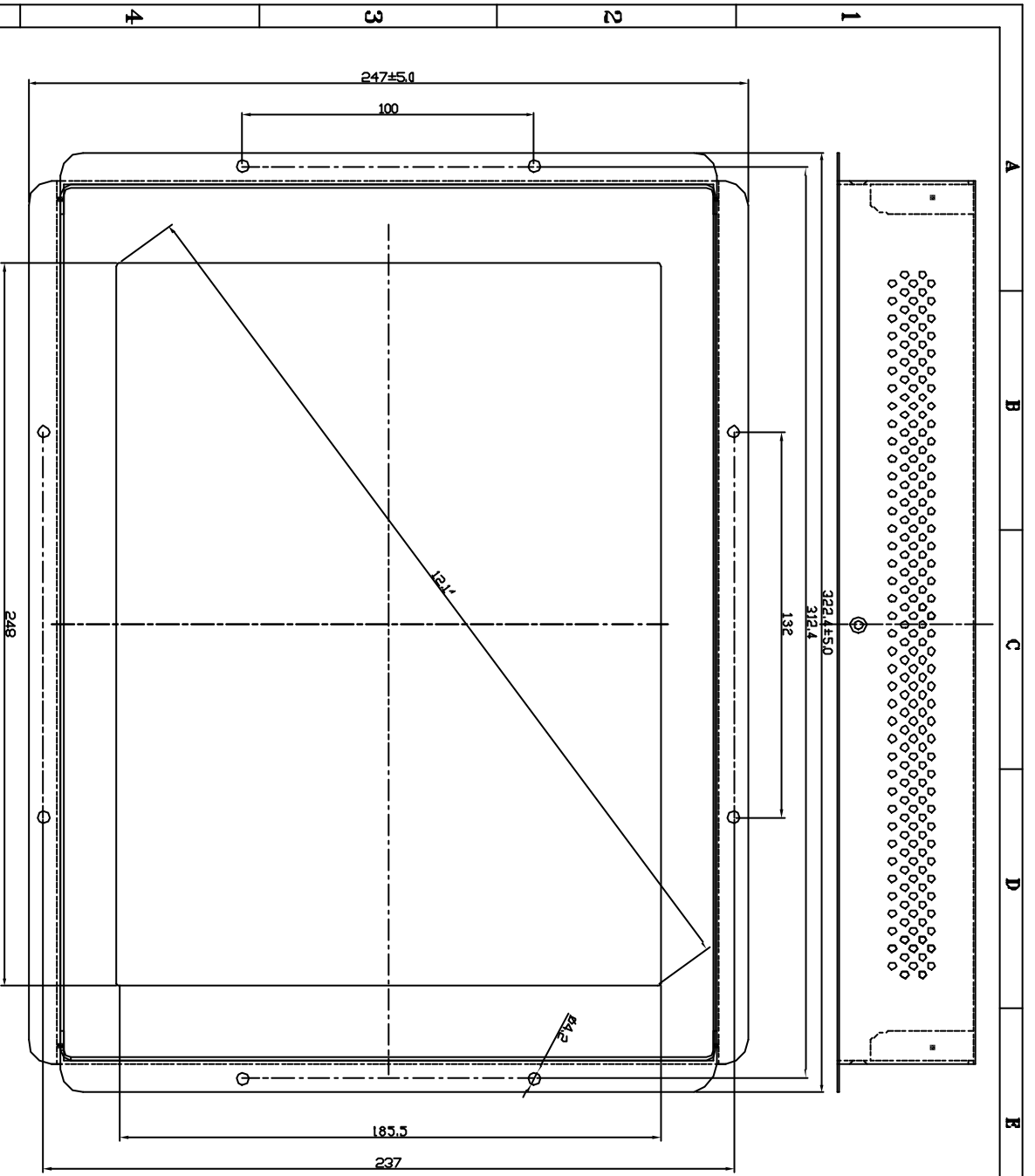


## Model No.: OP-112 Specifications

<b>LCD Display</b>	12.1" TFT LCD panel
<b>Display Size</b>	245.76 x 184.32 mm
<b>Pixel Pitch</b>	0.24 x 0.24 mm
<b>Display Mode</b>	VGA 640x350 (70Hz) VGA 720x400 (70Hz) VGA 640x480 (60/72/75Hz) SVGA 800x600 (56.3/60.3/72.2/75Hz) XGA 1024x768 (60/70/75Hz) Mac. 640x480 (66.7Hz) Mac. 832x624 (74.55Hz) Mac. 1024x768 (60/74.927 Hz)
<b>Max. Resolution</b>	1024x768
<b>Contrast Ratio</b>	150:1
<b>Brightness</b>	180 cd/m <sup>2</sup>
<b>Response Time</b>	30mS (Rising + Falling)
<b>Display Colors</b>	16M (dithering)
<b>Viewing Angle</b>	+40 <sup>0</sup> ~ -40 <sup>0</sup> (L/R), +10 <sup>0</sup> ~ -20 <sup>0</sup> (U/D)
<b>Input Signal</b>	
<b>Video</b>	R.G.B Analog 0.7V Peak-to-Peak
<b>Sync</b>	TTL Positive or Negative
<b>Signal Connector</b>	
	15Pin Mini D-sub
<b>Front Control</b>	Power Switch, Menu, Select (Up, Down), Adjust (+, -)
<b>OSD</b>	Auto-Adjustment, Contrast, Brightness, Clock, Phase, H-Position, V-Position, Color Temperature
<b>Plug &amp; Play</b>	DDC1/2B
<b>Optional</b>	Touch Screen Video in: Pal/NTSC & S-video/AV connector Speakers: 1W x 2
<b>Power</b>	Universal 90-240V, 12V/35W
<b>Dimensions</b>	322 x 247,5 x 47,6 mm
<b>Weight (Net)</b>	4 Kg
<b>Certification</b>	FCC-B, CE, UL



Detail  
Scale 2/1  
(4 pcs)

ISS.	REVISIONS	DESCRIPTION	DATE

DWG. TITLE 12.1" OPEN FRAME OVERALL

DWG. NO.

MATERIAL

SHEWINK

MADE BY DESIGNED BY/DWG. SCALE

7:1/2/7

CHECKED BY

DATE 04/24/2002

SCALE A

1:1

DATE

04/24/2002

STAC

STARBUCK TECHNOLOGY CO., LTD.

TEL:886-2-652-1166

FAX:886-2-652-1146

E-MAIL:stac@stac1.seednet.tw

ADDRESS:801 NO.10, LANE 130, SECTION 3

WU-KANG ROAD, TPE91, TAIWAN R.O.C.

DATE

04/24/2002