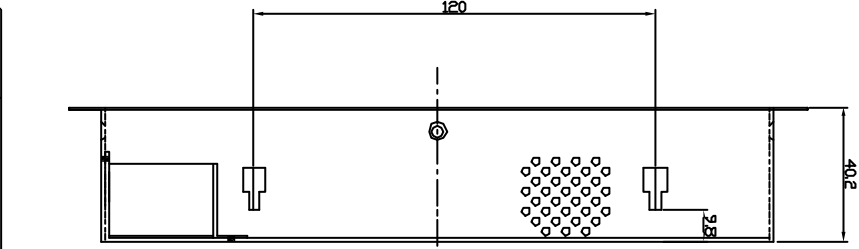
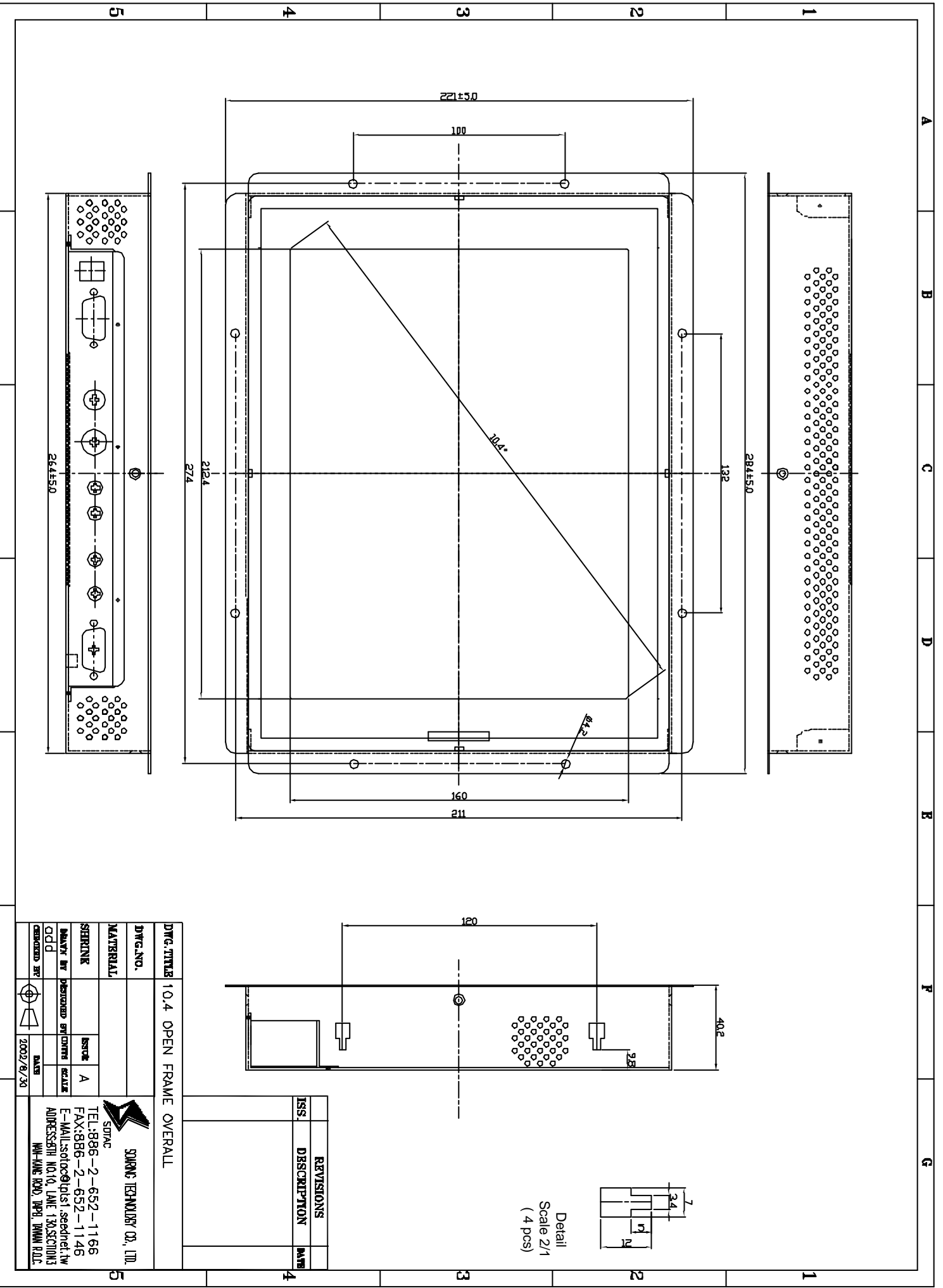


OP-104 Specifications

LCD Display	10.4" TFT Active Matrix Panel
Display Size	211.2 x 158.4 mm
Pixel Pitch	0.264 x 0.264 mm
Display Mode	VGA 640x350 (70Hz) VGA 720x400 (70Hz) VGA 640x480 (60/72/75Hz) SVGA 800x600 (60/72/75Hz)
Max. Resolution	800x600
Contrast Ratio	250:1
Brightness	150 cd/m²
Response Time	20mS (Rising), 30mS (Falling)
Display Colors	262K
Viewing Angle	+45° ~ -45°(L/R), +15° ~ -35°(U/D)
Input Signal Video Sync	R.G.B Analog 0.7V Peak-to-Peak TTL Positive or Negative
Signal Connector	15Pin Mini D-sub
Front Control	Power Switch, Menu, Select (Up, Down), Adjust (+, -)
OSD	Auto-Adjustment, Contrast, Brightness, Clock, Phase, H-Position, V-Position, Color Temperature
Plug & Play	DDC1/2B
Optional	Touch Screen Video in: Pal/NTSC & S-video/AV connector Audio System: 2W per channel
Power	Universal 90-240V, 12V/35W
Dimensions	284 x 221 x 40.2 mm
Weight (Net)	4 Kg
Certification	FCC-B, CE, UL



Detail
Scale 2/1
(4 pcs)

ISS.	REVISIONS	DESCRIPTION	DATE

DWG. TITLE 10.4 OPEN FRAME OVERALL

DWG. NO.		
MATERIAL		
SHEWINK	SCALE	A
MADE BY	DESIGNED BY	DATE
odd		2002/8/30
DESIGNED BY		

SPTAC
SPRING TECHNOLOGY CO., LTD.
 TEL: 886-2-652-1166
 FAX: 886-2-652-1146
 E-MAIL: sptac@quest1.secdnet.tw
 ADDRESS: 301 NO. 10, LANE 130, SECTION 3
 HSIANG-KANG ROAD, TAIPEI, TAIWAN R.O.C.